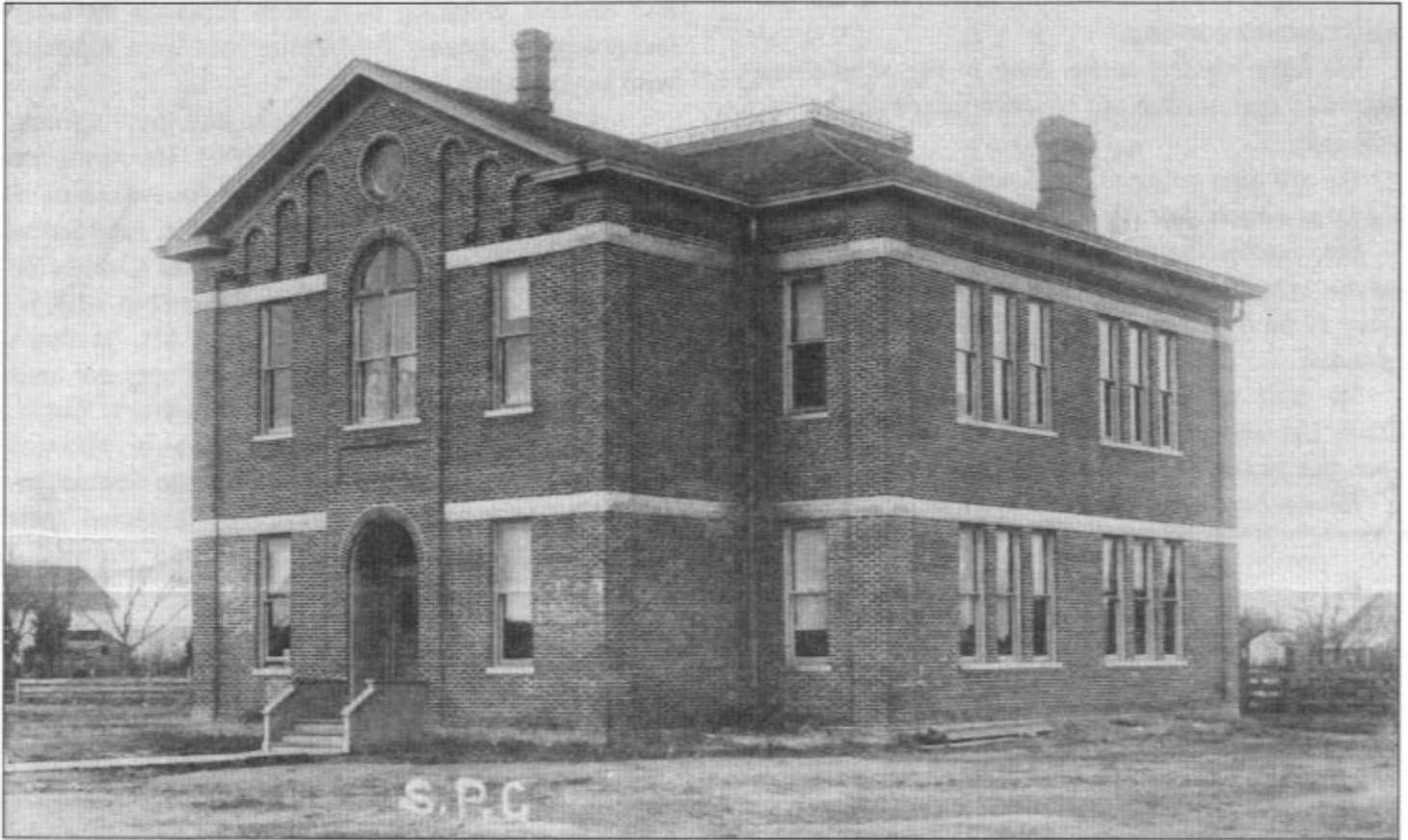


Historically Speaking

P.O. Box 1 • St. Paul, NE 68873 • www.historichc.us • E-mail: historichc@historichc.us



Beyond High School

By Julie Spilinek

Soon seniors from across the county will be walking across a stage to the tune of Pomp and Circumstances with a high school diploma in their hand. Many of them will have decided what they plan to do after graduation. For some that will include attendance at an institution of higher learning. Although long gone from the scene, many Howard County graduates between 1897 and 1942 chose to attend the Business and Normal College located in St. Paul. Professor S. D. Smith was the administrator to 50 students who attended classes held at the GAR

building the first year. Two years later, in 1899, an impressive brick building was constructed by C.V. Svoboda and Andy Gruber and was located at the site of the present Howard County Hospital. The cost of construction was covered by donations and the sale of shares.

The courses of study included commercial, stenographic, secretarial, banking, and civil service. Normal training courses were offered to those who wished to become teachers, especially secondary teachers as it was possible to teach in grades one through eight with a high school normal training

A Message From the President Gary Peterson

I know everyone is looking ahead and are anxiously awaiting spring

We have repairs to be done to the schoolhouse entry way and need to put concrete edges on the brick sidewalks

We are also going to lay down a platform for the old farm wagon that sits out front of the village

Our contractor, Josh Rudolph, will do the repair on the school and prepare the base for the wagon using 12 inch x 12 inch cement slabs that were donated to us.

We will be looking for volunteers for Spring Clean-Up and volunteers for when the museum is open this summer from Labor Day to Memorial Day.

Remember—dues for 2011 are due now



Joseph Zocholl, a native of Paplin, returned to Howard County and by 1911 was part owner of St. Paul Business College. He became the sole owner in 1916.

course. There is a complete list of classes elsewhere in this newsletter.) Under the commercial listing one finds Business Penmanship, Spelling, and Vocabulary. In visiting with a former student, these were stressed throughout the course. Among the classes listed one will note a few that have been eliminated from any of today's business courses. Shorthand, mimeographing and address graphing have been replaced by more technological means. Typewriting has been replaced with keyboarding.

Joseph Zocholl, who was born and grew up near Paplin, enrolled at the college in 1905. He continued his education in Chicago and taught for two years at St. John's University in Ohio. In 1910 he returned to Howard County and began teaching at the College. In 1911 he became a partner in its ownership with H. Lew Mathre. By 1916 he purchased Mr. Mathre's interest and became the sole owner and operator until 1942, when it closed due to the onset of World War II. Mr. Zocholl died in 1945; however, it was he who was responsible for the huge success of the institution. Hundreds of students successfully completed their course of study and ultimately became successful businessmen and women as well as teachers.

The college also provided instruction in music and occasional plays were presented. There were both boys and girls basketball teams that competed with area teams. It definitely served the county well.

PLEASE NOTE:

I would like to research the history of the Parochial schools of the county to be included in a future issue of *Historically Speaking*. If anyone has information or personal memories they would be willing to share, please send them to me at P.O. Box 68, Elba, NE 68835. Pictures would also be appreciated; these would be returned to you. I also plan to do one or two issues on the locally owned eating establishments that were located in Howard County, such as the recently demolished Uptown Grill. Drive-ins will also be included. Again, any information or personal experiences would be MOST APPRECIATED.

**For Sale: Entering Howard County—
A History of Howard County. Price
reduced to \$50. Postage is extra.**



Written on the back of the picture: Taken May 1, 1897. The "Unpracticed Spinsters" or Old Maids Club: First Row, left to right, Marie Hillebrand, Myrtle Johnson, Maud Still, Blanch Craven, Vera Force Taylor; Second Row, May Myers Frame, Maud Jackson Berray, Anna West, Eva Taylor, Oma Smith, Hildred Herron Mead; Third Row, Altha Henry, Kittie Earstin, Winnie Chadwick, Marian Jolls and Alice Bartholomew.

Tuition Rates

Life Scholarship (Time Unlimited) Complete Combined Course - - - - - \$225.00

Nine Months' Scholarship-- Any Course - - - - - \$175.00

Six Months' Scholarship-- Any Course - - - - - \$125.00

Four Months' Scholarship-- Any Course - - - - - \$90.00

Three Months' Scholarship-- Any Course - - - - - \$72.50

One Month's Scholarship-- Any Course - - - - - \$30.00

No extra fee or charge for use of typewriters or the Office Appliances, etc.

Come to St. Paul and SAVE.

Complete Outfit of Books and Supplies.

Business Arithmetic - \$1.00
 Business English - 1.00
 Correspondence - 1.00
 Business Speller - .50
 Rapid Calculation - .50
 Penmanship Paper - 1.00
 Business Law - 1.40
 Bookkeeping Manual - 1.50
 Retail Accounting - 3.25
 Wholesale Accounting - 3.40
 Partnership Outfit - 2.60
 Corporation Outfit - 3.50
 Higher Accounting - 3.20
 Auditing - 2.50
 Banking Outfit - 3.60
 Shorthand Manual - 1.50
 Gregg Speed Studies - 1.20
 Secretarial Studies - 2.00
 Typewriting Manual - 1.20
 Typewriting Paper - 1.00
 Salesmanship Manual - 1.50
 Filing Supplies - 2.40
 Civil Service Outfit - 3.00

Complete Outfit \$45.75

OUR GUARANTEE

We guarantee to save you from \$50.00 to \$100.00 on a complete scholarship as compared with what any other Business College in the state will charge you; and we stand ready to compare our courses of study and our modern equipment with that of any other Business College in this State.

Why pay from \$50.00 to \$100.00 more when you can get as good a course or a better one for less? You can not afford to make a mistake in the selection of a school.

St. Paul Business College

"THE SCHOOL THAT GETS RESULTS"

St. Paul, Nebraska

A brochure detailed the tuition rates for prospective students.

COURSES OF STUDY

Combined Commercial, Stenographic, Secretarial, Banking, and Civil Service Course

AVERAGE TIME REQUIRED, ELEVEN MONTHS

Commercial	Stenographic and Secretarial	Accounting and Auditing
Business English	Shorthand Principles	Bookkeeping
Business Correspondence	Speed Studies	Retail Offices
Business Mathematics	Office Dictation	Wholesale Offices
Business Law	Transcribing Notes	Commission Offices
Business Penmanship	Secretarial Duties	Manufacturing
Rapid Calculations	Office Procedure	Sole Proprietorship
Spelling and Vocabulary	Secretarial Accounting	Partnerships
Actual Business Practice	Office Filing	Corporations
Bookkeeping	Mimeographing	Actual Banking
Accounting	Multigraphing	Accounting
Auditing	Addressographing	Cost Accounting
Machine Bookkeeping	Touch Typewriting	Auditing
Calculators	Rough Draft Copying	Adding Machines
Coroptometer	Tabulating	Bookkeeping Machines
Advertising	Business Forms	Posting Machines
Salesmanship	Court Reporting	Civil Service Training

PREPARE FOR A GOVERNMENT POSITION

\$1,260 to \$3,200 a Year for You to Start

Our Civil Service preparation makes it easy for you to prepare for the Government examinations for any of these subjects:

Spelling	Mental Tests	Stenography	Mail Tests
Grammar	General Tests	Typewriting	Sorting
Vocabulary	Report Writing	Accounting	Following Instructions
Arithmetic	Letter Writing	Bookkeeping	Routing
Geography	Rough Drafts	Auditing	Graphing
Penmanship	Clerical Tests	Filing	Indexing

Our Civil Service Courses prepare the student for any of the following positions: Accounting Clerk, Addressograph Operator, Bookkeeper, Clerk, Clerk-Typist, Clerk-Stenographer, Statistical Clerk, Auditor—Income Tax Service, Bookkeeping Machine Operator, Calculating Machine Operator, Court Reporter, Junior Bookkeeper, Junior Stenographer, Junior Typist, Mimeograph Operator, Multigraph Operator, Secretary-Stenographer, Senior



Burroughs Bookkeeping and Posting Machine

Bookkeeper, Senior Typist, Senior Stenographer, Statistician, Junior File Clerk, Junior Auditor, Senior Auditor, Forest Ranger, Park Ranger, Airmail Clerk, City Mail Carrier, Postmaster—Second, Third, and Fourth Class, Post Office Clerk, Railway Postal Clerk, Rural Mail Carrier, Customs Inspector, Immigrant Inspector, Immigrant Patrol Inspector, etc., etc.

These Government positions pay from \$1,260 to \$3,200 a year to start, with excellent opportunities for advancement. Let us PREPARE YOU for the great opportunity which Uncle Sam offers you NOW!



Sandstrand Adding and Listing Machine

COURSES—

Business
Bookkeeping
Banking
Shorthand
Typewriting
Civil Service
Secretarial
English
Pen Art



POSITIONS

Secured for
Graduates

—
Students May
Enter
Any Time

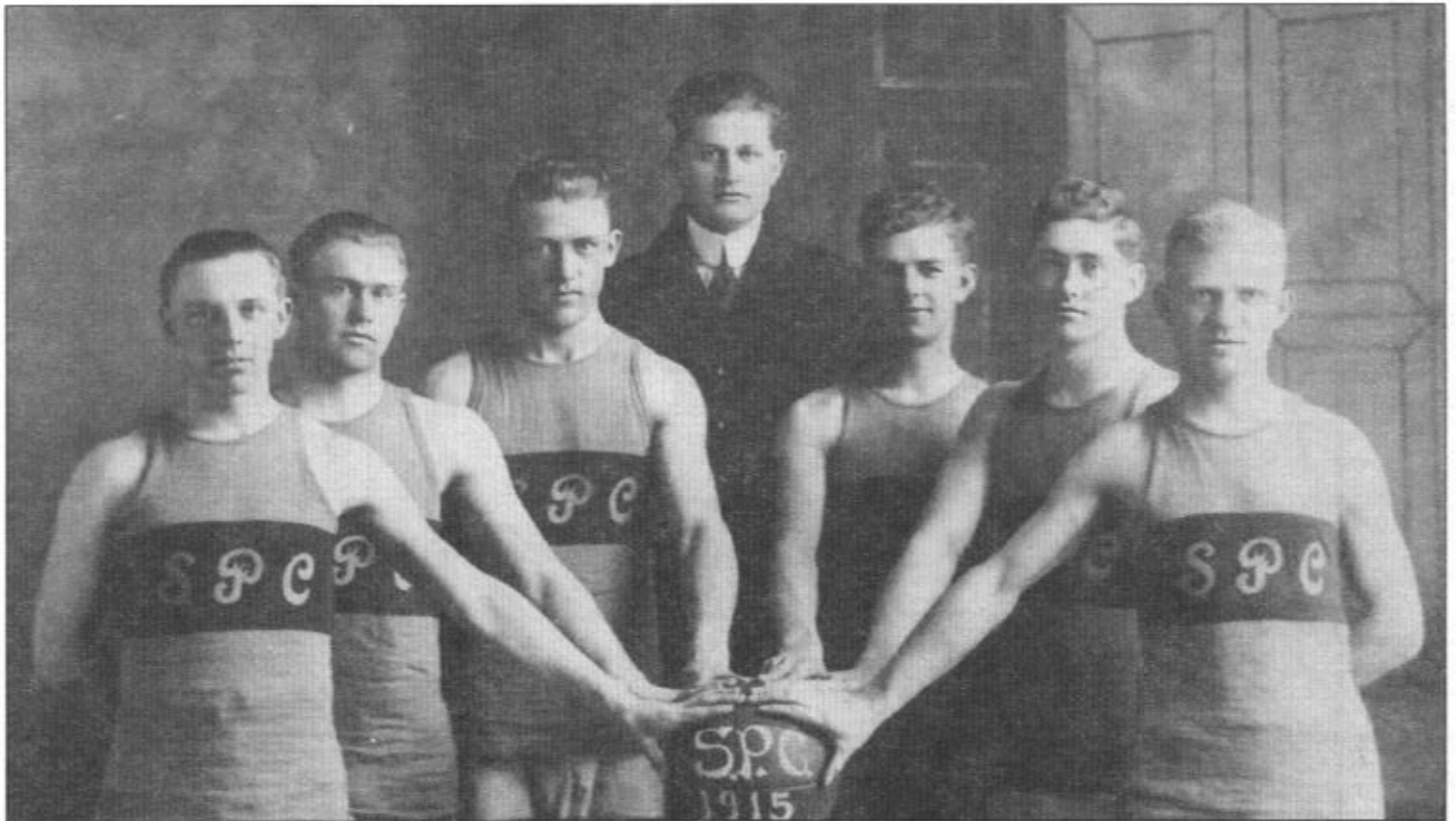
Dear Reader.— A good commercial education is, more valuable today, more of a necessity for ambitious young persons, than ever before. Thorough commercial training is the educational keynote of our times.

We specialize in this field of education, and wish to acquaint you with the advantages our institution affords. After carefully examining the accompanying literature, we request that you investigate our facilities for giving instruction, and learn of our success in securing positions for our pupils.

Hoping that you will either call to see us, or write us regarding this important matter, we are,

Sincerely yours!

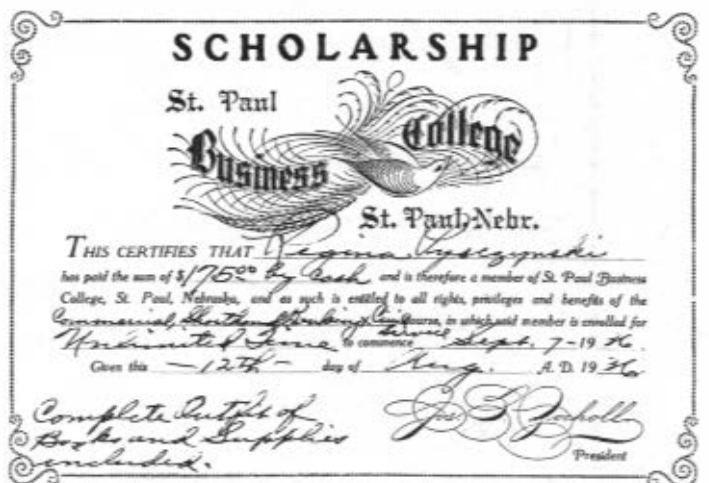
Jos. B. Zocholl
President



The identities of the 1915 St. Paul College men's basketball team are not known.



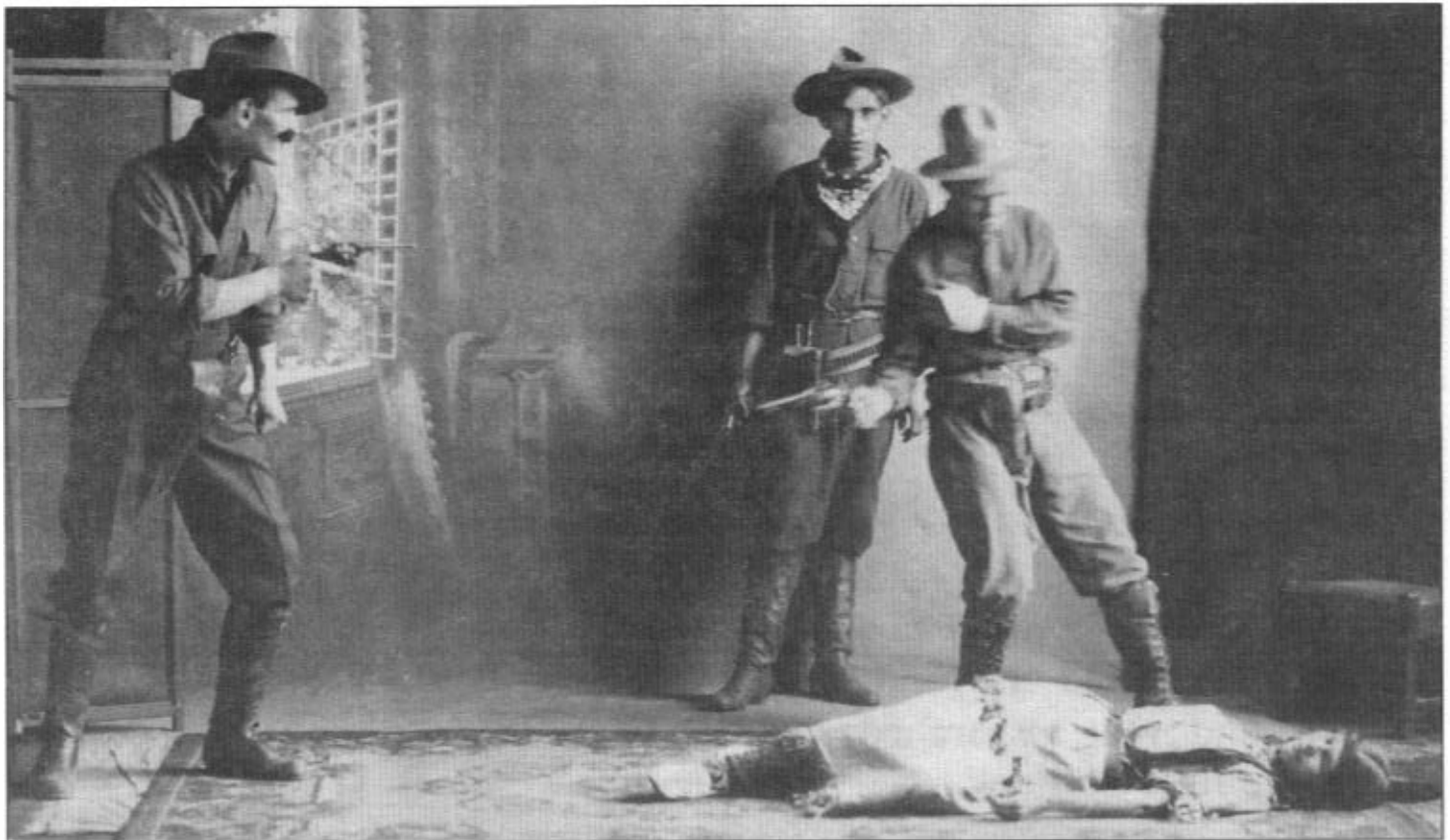
St. Paul College fielded a women's basketball team in 1909-10. The top right player was identified as Valdena Johnson (Gibson).



In 1936, Regina Pyszynski paid \$175 and was enrolled in the St. Paul Business College courses of Commercial, Shorthand, Banking and Civil Service. She paid cash, in full, prior to the start of classes and was therefore entitled to an unlimited time to complete her course work.



The business college occasionally presented plays. Cast members in the top picture were Mildred Harvey (Christensen-Blazek), Staley Tucker, Faye Jensen, Robert Reiman, Lillian Bramer and William Blaha. The names on the back of the picture below were Clyde (Ringtail) Leathem, Leonard Stewart, Edward (Fiesty) Gruber and Edna Nelsen.





HOWARD COUNTY HISTORICAL SOCIETY
 P.O. BOX 1
 SAINT PAUL, NEBRASKA 68873

Non-profit Organization
 U.S. POSTAGE
 PAID
 Permit No. 7
 ST. PAUL, NE 68873

Historically Speaking



INSIDE: This issue of *Historically Speaking* is entitled "Beyond High School" and was researched and written by Julie Spilinek.

Historically Speaking

PUBLISHER:

Howard County Historical Society

EDITING, LAYOUT, AND DESIGN:

Many fine members of the Howard County Historical Society

CIRCULATION:

300+

MAILING ADDRESS:

P.O. Box 1, Saint Paul, NE 68873

MEMBERSHIP (INCLUDES NEWSLETTER SUBSCRIPTION AND MAILINGS):

\$10 per person

Preserving the history of:
 Boelus, Cotesfield, Cushing,
 Dannebrog, Ozarkville, Elba,
 Fairdale, Farwell, Nysted, Paplin,
 Saint Liberty, Saint Paul, and
 Warsaw

2011 BOARD OF DIRECTORS:

Ray Lath
 Jessie Kiser
 Charles Govlik
 Marlene Govlik
 Larry Lukasiwicz
 Kayleen Lukasiewicz
 Janet Hruza
 Jean Poss
 Julie Spilinek
 Joseph Javorsky

2011 OFFICERS:

Gary Peterson, President
 Evelyn Dvorak, Vice President
 Joseph Javorsky, Treasurer
 Dave Sprague, Secretary

The HCCHS is a non-discriminatory provider.