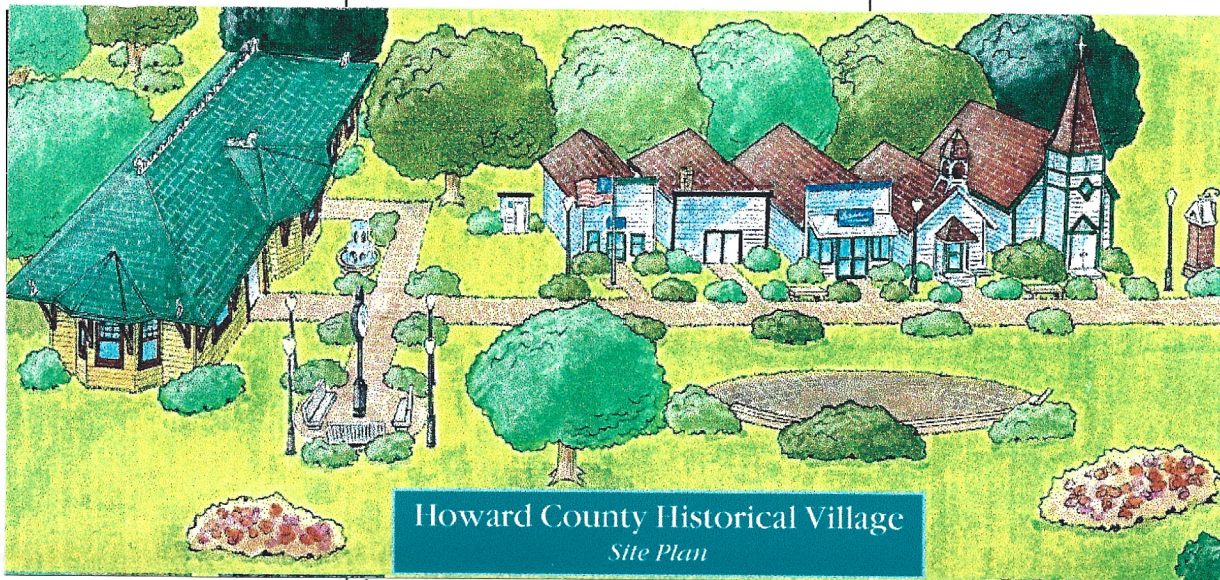


historically speaking

A QUARTERLY NEWSLETTER FROM THE HOWARD COUNTY HISTORICAL SOCIETY

P.O. Box 304 / St. Paul, Nebraska / 68873

Winter Issue 1998



*Over 5,100
volunteer hours
accumulated in
1998 towards
preservation
projects by Society.*

From the Board of Directors

We're tired...but happy. 1998 has been a very good year for the Howard County Historical Society. The entire County saw the level of appreciation towards preservation issues soar upward. Dannebrog fought a

valiant fight to save City Hall. St. Paul's Howard Avenue was spruced up with building restoration and greenery. Paplin's Rectory was moved and saved. Dannevirke Lutheran and Paplin Catholic Churches have never looked better, even though they have been closed. And best yet: our Historical Village's appearance changed dramatically.

F.F.A. members became involved, as did the Cub Scouts. For the first time, youth played an important role in the preservation and attractiveness of our County's Village. Hosts from neighboring Howard County towns and organizations took time out of their Sundays to greet our out-of-town guests.

Membership soared to nearly 300.

We offered outreach to Dannebrog's proposal for a Danish History Museum and Ashton's Polish Museum.

Our county veterans continue to be remembered properly with the work of our veterans committee. And our very own Jean Potts was given an exhibit which members of the the Nebraska Humanities Council describe as "Outstanding."

Our programs and events like the "Holiday Tour of Homes" and "Company's Comin'" helped bring people to St. Paul and the Village...over 1,700 throughout the entire year.

The City of St. Paul, area businesses, organizations, and individuals played key roles in helping us with our newly-restored Cotesfield Post Office, W.P.A. outhouse, brick walkway, street lamps, and greenery.

Please take a moment to review the success of 1998. Better yet, become involved in helping preserve it. As the great leader Gandhi once said, "Be the change that you expect."

Saturday salute
Leadership from individuals
makes difference for communities

Grand Island Independent
salutes Historical Society
on Depot plan.



Fairdale
Methodist Church
is remembered.

Ground Breaking for new Union Pacific Depot.



Board members (and children) present for the depot ground breaking, left to right: Anna King, Elizabeth King, Rachel King, Terry King, Marion Bahensky, Dave Sprague, Mena Sprague, Ron Sack, Janet Hruza, and Roderick Burkhardt.

Board members not pictured: Diana Markvicka and Galen Trimbath. Photo courtesy of the St. Paul Phonograph-Herald.

By Elizabeth King

Sunday, October 18th is a day my husband and I won't forget. It was the day ground was broken for the new depot. Anna and Rachel, our daughters, won't forget it either. They are excited about the depot and dream along with us about all of the potential it has -- they especially like the built-in bay window seat. Of all the Howard County depots remaining that we toured and tried to purchase, this one is by far better than all combined.

I know that my good friend, Peg Zocholl, would be so happy for all the Society is doing to beautify and enrich Howard County's history and the Historical Village. She is greatly missed, but is felt in the positive attitudes of the members and community leaders who take the time to say to me and the other Directors, "Your work is well respected. Thanks for sharing your talents and vision."

Our thanks to the Grand Island Independent newspaper for extending their endorsement.

Editorially speaking

Saturday, June 20, 1998
Courtesy of the Grand Island Independent

Saturday salute

Leadership from individuals makes difference for communities

Good local government alone is never enough to build outstanding communities. The leadership that really makes the difference comes from individuals, organizations and businesses.

This week there were at least three examples of how individuals helped lift their communities to levels that are out of the reach of government:

• The Howard County Historical Society will move the old Shelton depot to the St. Paul Historical Village. Marlon Bahensky, president of the Howard Historical Society, notes: "A depot was one of the most important features of a pioneer main street." The relocation and restoration of the depot will provide cultural enrichment for years and attract more visitors to the village.



The Fairdale Swedish Methodist Episcopal Church.

Written by Josephine Berggren

Edited by Ron W. Sack

The activities of the Fairdale Methodist Church date back to the late 1890's, when a few Swedish pioneer families began to feel the need of religious services. Mathias Lindberg, one of the older pioneers, had become acquainted with the activities of the Methodist Church through camp meetings held at Stromsburg.

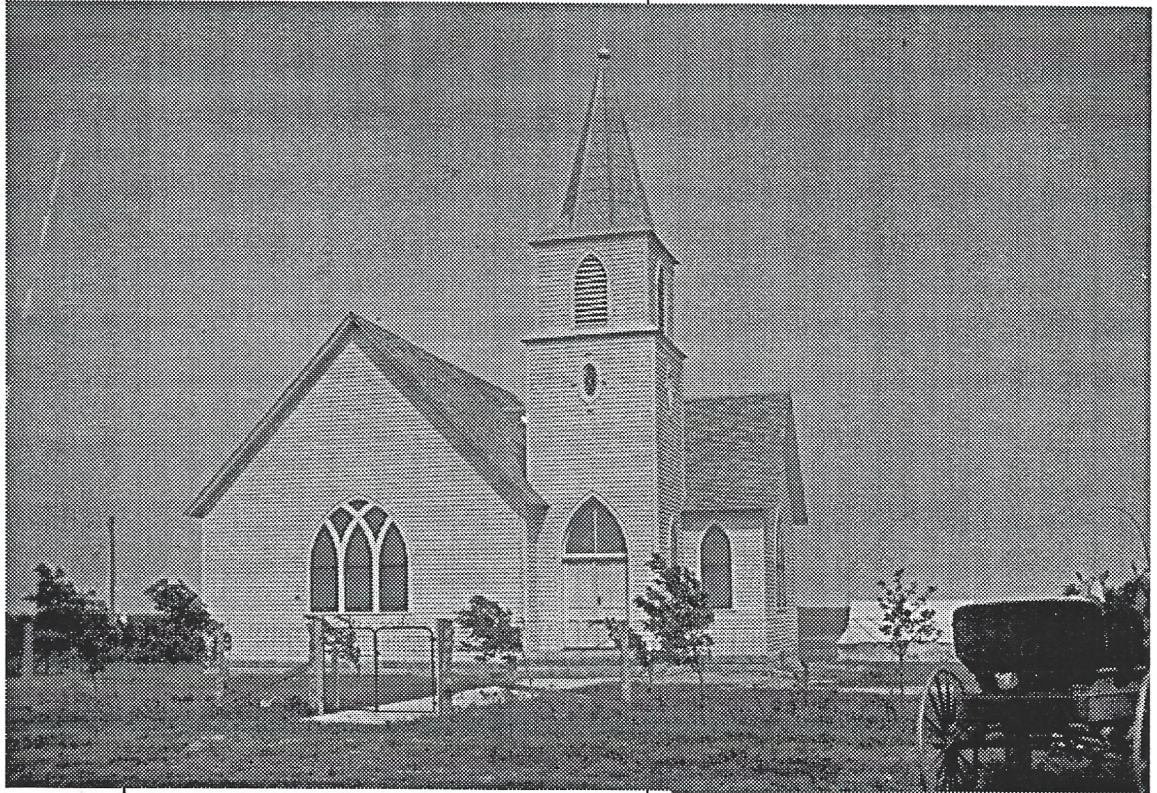
He arranged Rev. A. J. Lofgren of Chicago to come out and organize a church at Fairdale. The original group consisted of five or six families, and services were held using the Swedish language.

When Rev. P. Munson became District Superintendent, revival meetings began to be held for a couple of weeks each winter. As a result of this, many new names were added to the church roll. Among the outstanding ministers who brought the word of God during this time were Rev. Emil Malstrom, A.F. Winell, and John Norton.

All of the people felt the need for a more suitable place of worship. By 1910, membership and interest in the church were growing.

A subscription list was passed among the members and friends and sufficient funds were raised to erect a nice little church. A three acre lot of ground was selected; many willing hands began building the church.

The heavier burden probably fell on the Board of Trustees, composed of John Haggstrom, August Jacobsen, and John N.



Larson. Larson planted trees around the plot and cared for them, often bringing water from a great distance.

The church was dedicated in the fall of 1910 -- free of debt.

God must have felt the need of giving these plucky pioneers a trial, for within a year, the new church burnt to the ground.

Nothing daunted the faithful members, for they immediately made plans and built the second church. On August 4, 1912, the second church was dedicated.

Rev. O. W. Strombom was the first resident pastor. Through his direction a parsonage, along with other buildings, were erected on the church grounds. As there were many young members at this time, Rev. Strombom labored long and faithfully for the establishment of a strong Epworth League.

The community later consisted of many different nationalities, so under the direction of pastor N. G. B. Barton, the church joined the Nebraska Conference of Methodist Churches in 1928.

All the Charter members of the church have passed on to their reward, but their



Top photo: the second Fairdale Swedish Methodist Episcopal Church shortly after its completion in 1912. Bottom photo: the Fairdale Methodist Church in 1983.

As the number of members dwindled, the church was later closed. Today, all that remains are a wonderful cemetery and those incredible memories of the pioneer spirit.

children and grandchildren -- together with many friends -- gather each Sunday. May it ever be a haven of rest to many more in years to come!

*Josephine Berggren, 1945
Charter Member of the Church*



Fairdale through the years.

By Ron W. Sack

One of my favorite photographs in the "Fairdale Collection" is the one shown above. It is titled "A donation party for a Minister." To me, this photograph captures the heart and soul of Howard County.

Besides this extensive photograph collection, other items from Fairdale exist at the Historical Village. Inside the Farwell Lutheran Church at the Village is an eight foot candle lighter once used at the Fairdale Church to light the gas ceiling lights. Also in the Farwell Church is a glass display case located in the entry way. This was once an altar used in the Fairdale Church and built by Ed Berggren in the 1950s.

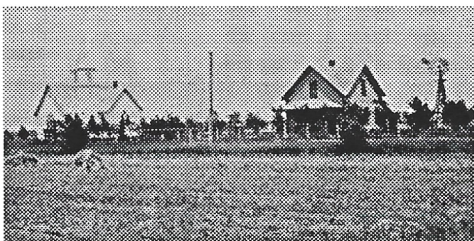


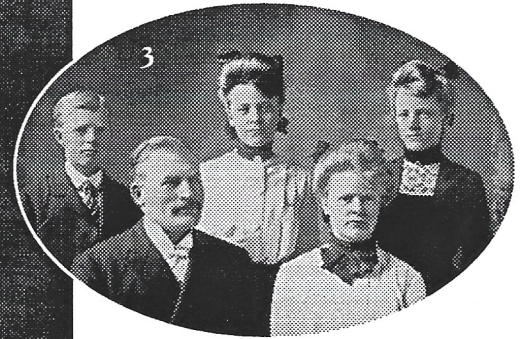
Photo at near right: "Fairdale picnic at the river," date unknown.

Photo below: Confirmation class of 1930-31. Front row, left to right: LeRoy Oakeson, Francis Neilson, Rev. Weary, Anna Dahlberg, Wilbur Haggstrom. Back row, left to right: Harold Johnson, Mildred Haggstrom, Rudolph Berggren, Randolph Salter, Kenneth Berggren, (?) Salter, Quinten Jacobsen, and Arlyne Jacobsen.



Photo in lower left corner: Fairdale Church and Parsonage, circa 1915.





Pictured at left are some of the "firsts" which occurred at the Fairdale Church.

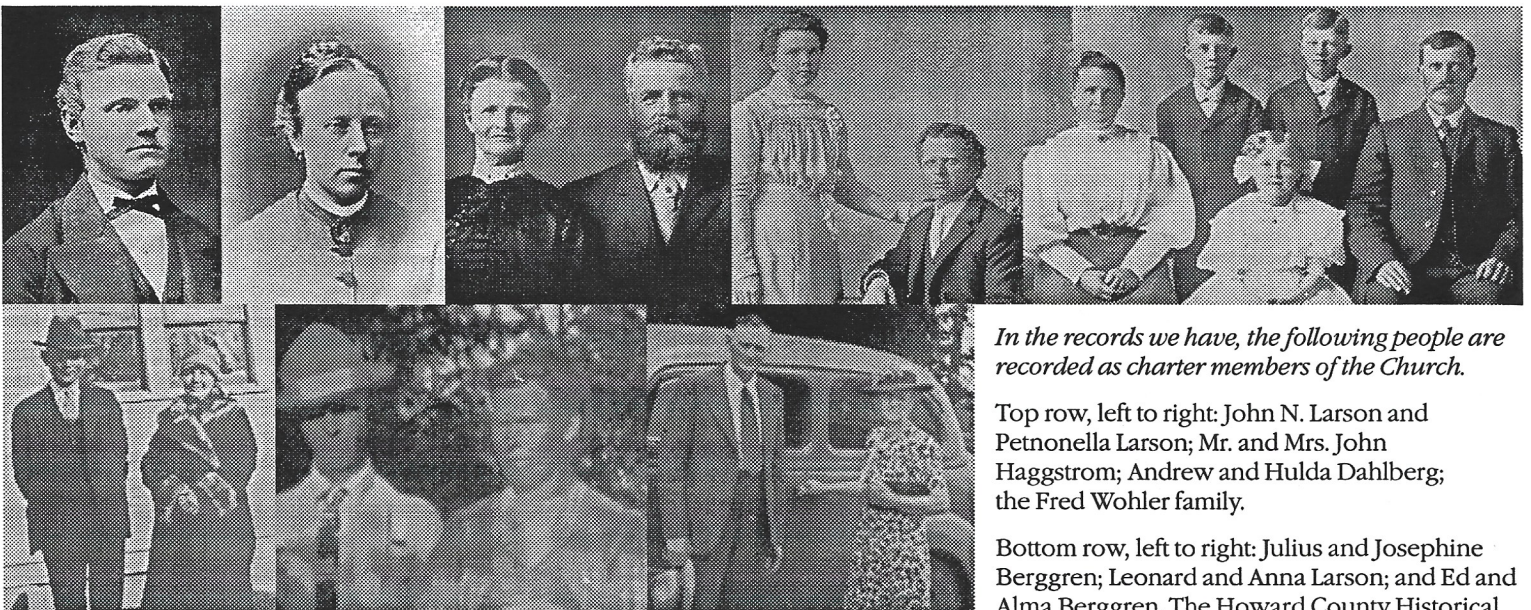
1. Mr. and Mrs. Gus Haggstrom were the first people married in the first church.

2. Rev. and Mrs. John Norton. Rev. Norton was the first part-time minister appointed after the church was built in 1911.

3. Believed to be the first confirmation class. Left to right: Gus Haggstrom, Rev. Munson, Ella Haggstrom (Falk), Anna Larson, and Emma Larson.

4. Rev. Emil Malstrom family in 1899. Rev. Malstrom was the first to be the "presiding elder" at this community.

Charter Members of the Fairdale Swedish Methodist Episcopal Church.



In the records we have, the following people are recorded as charter members of the Church.

Top row, left to right: John N. Larson and Petnonella Larson; Mr. and Mrs. John Haggstrom; Andrew and Hulda Dahlberg; the Fred Wohler family.

Bottom row, left to right: Julius and Josephine Berggren; Leonard and Anna Larson; and Ed and Alma Berggren. The Howard County Historical Society is extremely grateful for this outstanding collection from the Fairdale Church.

From our mailbox.

"...It was so much fun to receive the historical newsletter containing articles about St. Libory. Ed was pleased and I enjoyed reading it, too. Thanks for thinking of us."

Ed and Donna Assendrop
St. Libory

"Enclosed are my 1998 dues -- \$10. Enjoyed the newsletter and especially my family's sign BARTLE.

Thank you for all your good work."

Daniel F. Moravec Sr.
Lincoln

"A little donation to support your efforts. A great thing you are doing (veterans' records). All this type of record, if left with individual families, would soon be lost."

Ralph Frandsen

"Received the Fall issue of the newsletter and note 'dues are due.' I am also enclosing a donation.

...You are all doing a great job, with all your acquisitions, etc. -- and I continue to be so impressed with the newsletter.

Keep up the good work!"

Marj Southard
Lincoln

"What an exhibit, it surpassed everything I had imagined and I know Jean would be deeply grateful for the honor bestowed on her by St. Paul. The Howard County Historical Society should be proud, and Ron's design and layout -- perfect.

Thanks to our most generous and hospitable hostess, Marian Potts, our weekend was magical.

I wish you every success with your ongoing projects and I am sure they will be

an inspiration to future generations.

Thanks for inviting us, we thoroughly enjoyed ourselves."

Emer Murphy
New York

"Hi. I've neglected getting this to you too long -- I sure don't want to miss any of the newsletters. They are all outstanding."

Doris Leth
St. Paul

Recent artifact donations.

Bernice Hill family

Marble decorative soda fountain items from the former Moravec Drug Store in St. Paul.

Peg Zocholl estate

St. Paul Business College photographs, stationary, and other memorabilia. Zocholl family photographs, clothing, and furs. (Most articles will be the basis of an exhibit on the Business College.)

Pauline Sack estate

Additional items from St. Paul business woman and missionary Anna Anderson: walrus tusks (from Anna's missionary work on the island of St. Lawrence), 1915 adding machine, "Majestic" heater and other household items. (Most items will be located in the Gruber House.)

Henry Vincik

Emil Lind "The Happy Swede" of Cotesfield advertising mirror, circa 1940's. (This will be placed in the Cotesfield Post Office.)

Marie Iwanski

1930's exterior light fixture and shade. (To be placed on the front of the St. Libory schoolhouse after spring painting and the new sign are completed.)

historically speaking

PUBLISHER:

Howard County Historical Society

Including the towns and settlements of: Boelus, Cotesfield, Cushing, Dannebrog, Dannevirke, Elba, Farwell, Nysted, Paplin, St. Libory, St. Paul, and Warsaw.

EDITOR:

Ron W. Sack

CIRCULATION:

300+

MAILING ADDRESS:

P.O. Box 304, St. Paul, NE 68873

WEBSITE ADDRESS:

<http://162.127.10.1/~stpaulac/HCHS.html>

MEMBERSHIPS:

\$10 per person

Mena Sprague, Membership chair
844 20th Ave., St. Paul, Nebraska, 68873-3518

1998 BOARD OF DIRECTORS:

Marion Bahensky
Roderick Burkhardt
Janet Hruza
Elizabeth King
Terry King
Diana Markvicka
Ron Sack
Dave Sprague
Mena Sprague

OFFICERS:

President: Marion Bahensky
Vice President: Dave Sprague
Secretary: Loretta McDowell
Treasurer: Janet Fenton

Your support is important to us.
The HCHS is a non-profit organization.

Historical Society says "Thank you."

We are grateful to all our wonderful members and supporters who helped make 1998 great through their donations of time, talents, money, food, and artifacts.



1998: A Banner Year For Preservation!

A look at over 5,100 hours of community service to Howard County.

From the Board of Directors

In 1998 we probably got more done than was done in the past 15 years. We amended our by-laws to clarify directors' roles and responsibilities, got a mail ballot approved, changed the terms of office from one to two years with staggered terms, and added an eleventh Director to break tie votes.

The best thing of all is that you, our members and supporters, helped make all of this happen!

Village Site --

- Established a site plan for short- and long-term planning
- Erected three authentic street lamps
- Completed phase one of brick walkway
- Cleaned up village site
- City placed three on-site water hydrants
- Removed hurricane fence
- Planted trees
- Started brick entrance columns
- Poured concrete for brick/wood fence

Farwell Danish Lutheran Church --

- Restored, cleaned and repainted building
- Erected original sign with brick poles
- Centennial Celebration

Cotesfield Post Office --

- Restored, cleaned and repainted building
- Restored and painted interior of building
- Researched history of building for archives
- Created displays previously in storage
- Designed and erected new sign
- Restored and erected flag pole
- Added attractive brick landscaping

WPA outhouse from Cotesfield --

- Moved building to village site
- Repainted building exterior

General Store --

- Erected "Bartle's" sign
- Mounted exterior light
- Moved postal artifacts to post office

St. Libory Dist. #41 Schoolhouse --

- Cleaned cloakroom
- Scraped exterior for 1999 painting

- Transferred many valuable paper artifacts to climate controlled conditions

Blacksmith Shop --

- Painted trim on front of building

Union Pacific Depot --

- Purchased a beautiful Union Pacific Depot
- Started fundraising
- Poured foundation
- Moved building to village site

Gruber House

- Cleaned and painted garage store room
- Tilled front terrace
- Placed Paul carriage stone at entrance
- Erected another street lamp at this site
- Painted front porch trim

Exhibits --

- Completed extensive Jean Potts exhibit
- Created Paplin Catholic Church exhibit
- Created three new exhibits at St. Paul's new Community Library (Danish, Business College, Iams family)

Fundraisers --

- Jean Potts exhibit fundraiser
- Veterans' research funding
- Union Pacific Depot fund drive
- Bake and Craft Sale
- Sawyer Brown Fundraiser

Events/Programs--

- "Nebraska Mystery Writers"
- "Last of the One Room Schools"
- "Romance of Rural Mailboxes"
- "Nebraska Depots Yesterday and Today"
- Cotesfield Post Office Grand Opening
- Village Walkway Ribbon Cutting
- Jean Potts Exhibit Dedication
- Holiday Home Tour
- Company's Comin'

Research Projects --

- Continued research on County veterans
- Completed Jean Potts research
- Completed signature quilt histories
- Weekly Column
- Started research on County churches
- Started research on Danish history

Publications --

- Four quarterly newsletters
- Village, Gruber House, and Baseball Museum brochure
- Souvenir Program for Farwell Church

Accessioning/Artifacts --

- Accessioned over 2000 new artifacts
- Established the Jean Potts archives
- Established the Paplin collection

Long Range Planning --

- Complete brick walkway
- Courtyard with benches
- Clocktower
- Water Fountain
- Bell collection
- Landscaping

Grants --

- Completed the grant from the State Tourism Office for a new brochure
- Sonderup Trust (Two new street lamps)
- Applied for three other grants

Awards --

- *Midwest Living's* Preservation Award
- 100 Initiatives in Rural Development (St. Paul's Baseball theme: Batting 1000)

Living History --

- Summer blacksmith demonstrations
- Hosted the Lower Loup Muzzle Loaders

Preservation Outreach --

- Dannebrog and Ashton's Museum proposals
- Exhibits at St. Paul's Library

Publicity --

- *Omaha World-Herald* articles
- *Grand Island Independent* articles
- *St. Paul Phonograph-Herald* articles
- KOLN TV coverage
- KHAS TV coverage
- NTV TV coverage
- *Midwest Living* Magazine coverage
- *Nebraska Life* Magazine coverage
- Various radio station coverage

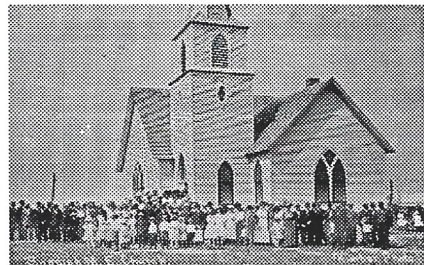
Please stop by and take a look at everything. YOUR history has never looked so good.

New Yorker extends thanks.

So many thanks for embracing me into your community. What a wonderful spirit and pride your town and its people hold. The work that your Historical Society does is testament to your commitment of preserving the rich history that are charged with passing along to the next generation.

It is with special pride that I was fortunate enough to be a part of the dedication of the Jean Potts exhibit. The core of the exhibit remarkably captures the heart of Jean's life as a writer in New York City.

She would have been so pleased with the tribute that you have bestowed on her. It is truly remarkable! I am still amazed that I was able to visit the town I have heard so much about for so many years.



HOWARD COUNTY HISTORICAL SOCIETY
P.O. BOX 304
ST. PAUL, NEBRASKA 68873

Thank you for reminding me of the marvelous soul of the small town and the generosity of its people. Best of luck with all your wonderful projects.

I am sure your town values what you are all doing for its future.

Laurie Gallo, New York



Among those present for the dedication of the Jean Potts exhibit were, left, Emer Murphy and Laurie Gallo of New York City, friends of Jean Potts, and relatives Marian Potts of St. Paul and Deb Potts of Kearney. Murphy, who Jean Potts sponsored for citizenship in the 1970s, now lives with Potts and arranges for the mystery writer's care. Photo courtesy of the St. Paul Phonograph-Herald.

Dedication of Jean Potts Exhibit.

Dedication for the Jean Potts exhibit was on October 18, 1998. A group of nearly 40 heard personal stories from several of Potts' friends from New York as well as remarks from board members of the Historical Society.

Besides the Historical Society, funding and research were provided by the following people and businesses: Venus Bardanouve of Harlem, Montana; Marian Potts of St. Paul; Pat Kunze of St. Paul; Dr. Betty Levitov of Lincoln; Emer Murphy of New York; Jean Potts of New York; Ron Sack of Omaha; Library of Congress of Washington, D.C.; Maxine Lewis of New York; Bozell Worldwide of Omaha; Orent Graphics of Omaha; and Field Paper Co. of Omaha.

Non-profit organization
U.S. POSTAGE
PAID
Permit No. 23
ST. PAUL, NE 68873